

GardX Moto Total Protect.

Market leading professional paint
and metalwork protection for
your motorcycle.



THE PROBLEM.

A large percentage of your motorcycle is exposed paintwork, metal and alloys, which are under constant attack from UV rays, bird lime, moisture, road salt and other harmful elements.

All of these pollutants will inevitably degrade the appearance of your motorcycle's paintwork and lead to unwanted corrosion.

That's why your motorcycle needs powerful, extra protection to retain that showroom-like appearance

THE SOLUTION.

With GardX Moto Total Protect, we apply two different products:

GardXCP Xtreme Corrosion and GardX CX2 Ceramic.



GARDXCP XTREME CORROSION.

Firstly GardXCP Xtreme Corrosion Protection, which is a professionally applied anti-corrosion system that shields your motorcycle's metalwork from the harmful effects of moisture, road salt and other corrosive elements.

Tested in the most extreme conditions, GardXCP provides a durable, long lasting, non-sticky, soft surface film that gives your motorcycle's metal surfaces class leading protection from corrosion and rust.

Our professionally applied atomisation process delivers maximum protection with complete coverage, and optimal penetration into those hard to reach and inaccessible areas.

Having been tested in the harshest conditions and in product comparison tests, GardXCP* Xtreme Corrosion Protection consistently comes out on top.



GARDX CX2 CERAMIC.

Secondly we apply GardX CX2 Ceramic, which is a professionally applied motorcycle paint protection system that provides you with complete peace of mind by protecting your bike's paintwork.

With GardX CX2 Ceramic, you may never need to polish your bike again!

Proven in the world's harshest environments, the GardX CX2 Ceramic Motorcycle protection system with nanotechnology forms a highly resilient transparent coating that protects your bike's paintwork from harmful pollutants. It will even delay the effects of bird dropping damage and provides a high gloss showroom finish that resists attack.

The GardX CX2 motorcycle paint protection system provides valuable protection for your bike, enhances it's future re-sale value and comes with the assurance of a **3 YEAR GUARANTEE.**



HOW THEY WORK.

GardXCP Xtreme Corrosion Protection is a soft, anti-corrosive compound.

It creates a long lasting protective barrier to protect any steel, metal or alloy surface against the effects of rust and corrosion. After professional application the bonding of the film with the metal surface will ensure market leading corrosion resistance.

It can be applied to any exposed metal surfaces including engine components, chrome, alloys and electrical connections. Due to its low surface tension, once applied GardXCP spreads out quickly to provide optimal surface coverage and penetrates into inaccessible areas, such as seams, joints and threads.

This gives unrivalled protection to your motorcycle.

Furthermore, having been tested in the harshest conditions and in product comparison tests, GardXCP* Xtreme Corrosion Protection consistently comes out on top.

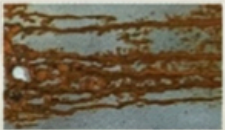
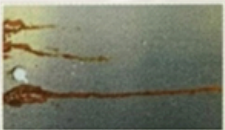
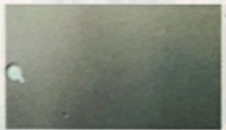
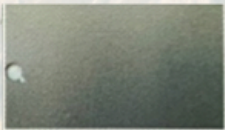
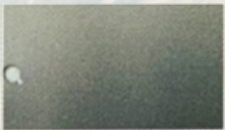
Accelerated Salt Fog Testing

(Steel panels, using Test Method ASTM B-117)

GARDXCP
*Xtreme Corrosion
Protection*
FROM **GardX** *MOTO*

GardXCP

**Leading
Competitor**



96HRS

144HRS

168HRS

HOW THEY WORK.

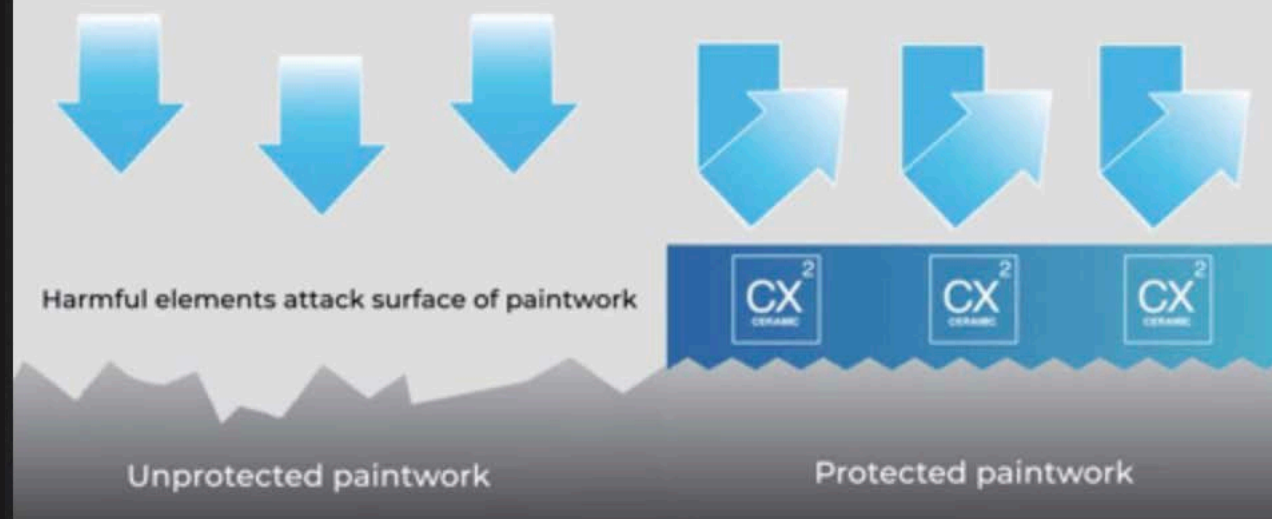
GardX CX2 is not a polish or a wax, it's a highly resilient Ceramic coating that forms an exceptionally durable protective barrier over your motorcycle's paintwork.

If you look at the paintwork of a new or used motorcycle under a microscope you will see lots of imperfections, known as castellations. Over time these castellations attract all manner of grime and environmental pollutants that degrade the paint, causing oxidisation and fading.

Unlike traditional paint protection systems, GardX CX2 Ceramic contains Polysilazanes. Upon application these molecules form an incredibly strong bond with your motorcycle's paintwork and cross-link to form a continuous, highly resistant ceramic coating, filling in the castellations and creating an ultra-durable, glossy protective finish.

The CX2 Ceramic coating is exceptionally hydrophobic and provides powerful paintwork protection against abrasive dirt and grime, road and sea salt, tree sap, acid rain and the sun's powerful UV rays. It even delays the damaging effects of bird droppings.

Chemical physical elements



TOTAL PROTECT CARE PACK.

As part of the Total Protect package you will be given a care and maintenance pack, to ensure your motorcycle and helmet always look at their best. Including:

- GardX Moto Dry Wash
- Microfibre Cloths
- A Cleaning Brush
- Helmet and Visor Cleaner
- Visor Anti-Mist Spray
- GardXCP Anti-Corrosion Spray
- GardXCP Chain Lube
- GardXCP Multi-Purpose Spray
- Packaged in a Branded Drawstring Bag



NEVER POLISH YOUR MOTORCYCLE AGAIN.

Give your motorcycle the protection it deserves and never polish your motorcycle's paintwork again. Once professionally applied, GardX CX2 Ceramic paint coating provides all these benefits:

- Maintains a high-gloss showroom finish, wash after wash
- Highly resilient hi-tech Ceramic Coating that bonds to paintwork
- Forms an ultra-durable glossy protective barrier
- Highly hydrophobic – providing exceptional weather resistance
- Improves resistance to abrasion and wear
- Protects your paintwork against harsh cleaning chemicals, oils and fuels
- Shields paintwork against extreme temperatures and harmful UV rays
- Makes washing your bike much easier
- Protects the future resale value of your motorcycle
- No need to polish your bike
- Tested in the worlds harshest environments
- Comes with a 3 Year Guarantee*

**Terms and conditions apply*



GIVE YOUR MOTORCYCLE THE PROTECTION IT DESERVES.

Once professionally applied, GardXCP* Xtreme Corrosion Protection provides all these benefits:

- Protects the future resale value of your motorcycle
- Professional atomisation application delivers maximise coverage and penetration
- Provides a durable, long lasting, non-sticky, soft surface film
- Shields your motorcycle's metalwork from the harmful effects of corrosion
- Class leading protection from corrosion and rust
- Customer care pack to ensure maximum ongoing protection
- Protects your electrical connections from harmful moisture ingress
- Optimal surface coverage that penetrates the most inaccessible areas
- In test after test, GardXCP sets unrivalled standards
- Keep your motorcycle corrosion free**

** GardXCP Xtreme Corrosion Protection – Powered by XCP Rust Blocker Clear Coat*

***Terms and conditions apply*



www.blademotorcycles.co.uk